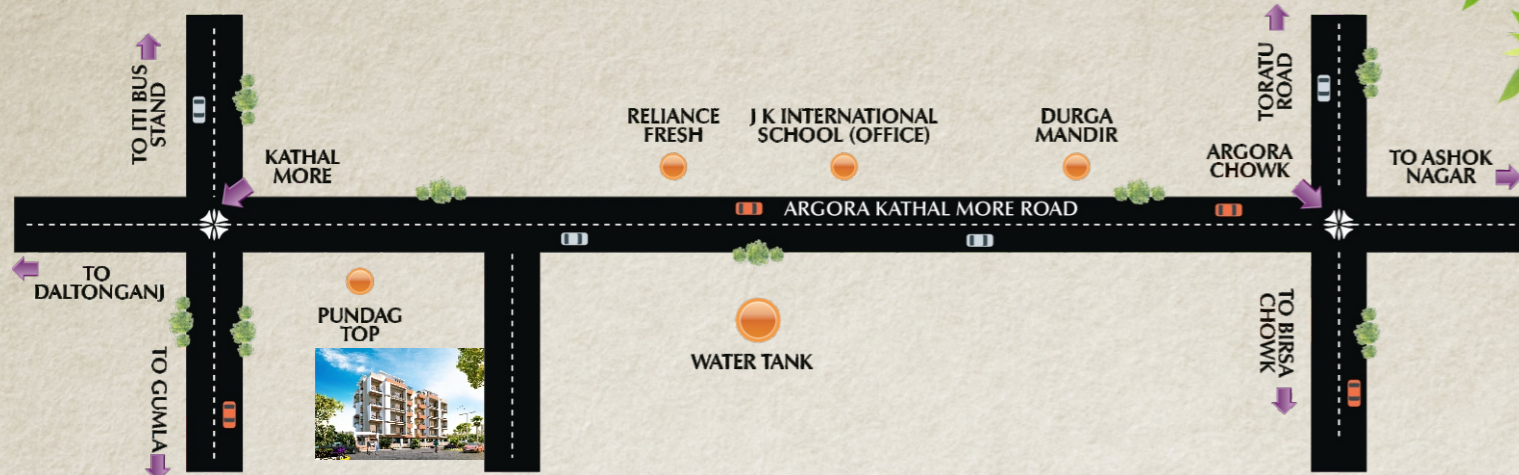


# Location Map



## KEY DISTANCE

SCHOOL	-	200MTR	RANCHI RLY.STN.	-	5KM
BANK	-	100MTR	HATIA RLY.STN.	-	5KM
HOSPITAL	-	1KM	RING ROAD	-	2KM
POLICE STN.	-	300MTR	JSCA STADIUM	-	4KM
AIRPORT	-	7KM	VIDHAN SABHA	-	4KM

## Payment Plan

At the time of booking	: 20%
15 days before ground floor	: 15%
15 days before 1st roof casting	: 15%
15 days before 2nd roof casting	: 15%
15 days before 3rd roof casting	: 15%
15 days before 4th roof casting	: 15%
At the time of possession & Registration	: 05%

### NOTE -

EXTRA CHARGES FOR EXTRA WORK.

GST AS APPLICABLE.

REGISTRATION CHARGES AS PER GOVT. NORMS.

## Amenities

- Technically designed for natural sunlight and fresh air ventilation.
- 24 hrs. Power backup for Lift & all common area.
- Plan approved by concerned department with Open Area
- Temple, School, Bank, Bus Stand, ATM & Medical Facility Near the project.
- CCTV camera & 24 hr. security guard.

DEVELOPED BY :



Office : Near Ashok Nagar, Road No. - 4, Argora, Ranchi - 834001.

email : globalbuildcon123@gmail.com

Phone : 9905615505, 8409989213, 9334510092

Design & Print : Maddy, 9304681838



A project of **GLOBAL BUILDCON**

## Global SAMRIDDHI ENCLAVE

SITE ADDRESS - NEAR PANI TANKI,  
BESIDE RELIANCE FRESH  
ARGORA KATHAL MORE ROAD, RANCHI.

**G+4 2/3 BHK Luxury Flats**





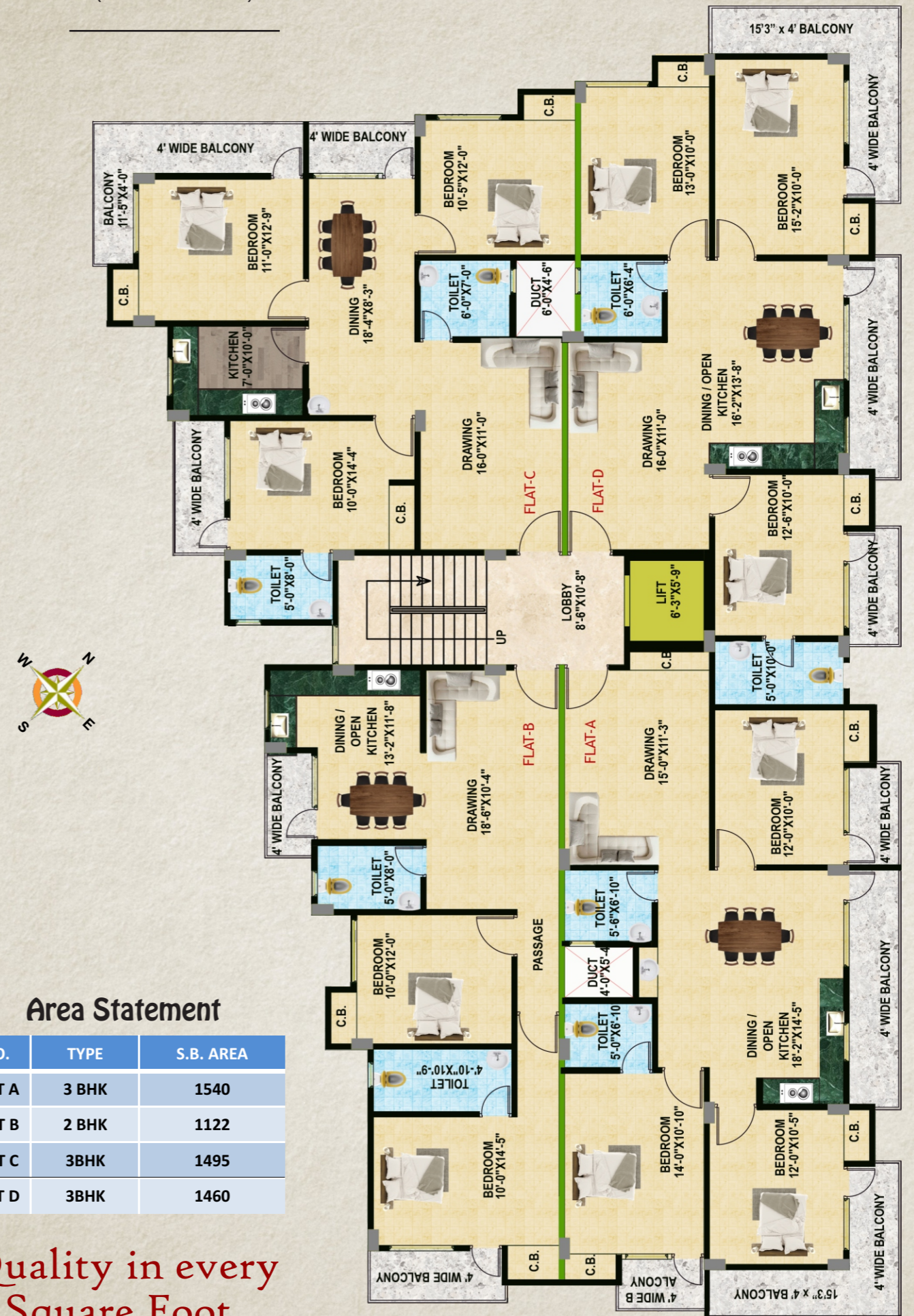
GLOBAL BUILDCON is a well experienced in the real estate sector. GLOBAL BUILDCON is a new company in Jharkhand. The company take care in quality, commitment & insuring that its projects features perfect in Vastu & a clear title. So as to give buyers a hassle free & happy ownership. Today owing on GLOBAL BUILDCON is associated with prestige. We are a specialised construction company. We provide high level of quality. Company operates as on independent entity supported by a dedicated team of accomplished professional that ensure complete customer satisfaction.

## Specifications

<b>Structure</b>	Earthquake resistant RCC frame as per the design of structural consultant.
<b>Wall Finish</b>	Internal wall with POP, External with wall Putty.
<b>Floor Finishing</b>	Drawing / Dining / Bedrooms / Balcony / Common area - Vitrified tiles / Cut marble.
<b>Toilets</b>	Walls - ceramic tiles upto height 7 sft. Flooring Antiskid tiles, standard Provision for hot and cool water supply in all toilets. Ceramic tiles system/ flush cock.
<b>Kitchen</b>	Flooring - Ceramic tiles. Platform - Granite slab, Sink - Stainless Steel. Wall - 2 ft marble dado above platform. Point for water purifier.
<b>Window</b>	Powder coated Aluminium sliding windows.
<b>Choukhats</b>	Precast/Wooden / Steel Door Frame
<b>Electrical</b>	Luxury - fitting branded electrical switches with sockets wiring - all electrical wiring in concealed conduits with copper wires. For distribution of light and power plugs we use ISI brand.
<b>Door</b>	Flush Door.
<b>Generator</b>	power backup in common areas and 300wats in each apartment. will be provided in drawing/dining room.
<b>Lift in apartment</b>	Good quality 6 Persons ISI make elevator
<b>Air Conditioning</b>	Provision for AC wiring in all bedroom (No AC are provided).
<b>Other facilities</b>	Provision for washing machine points will be provided at suitable location Provision for DTH television.

# Floor Plan

(TYPICAL G+4)



## Area Statement

NO.	TYPE	S.B. AREA
FLAT A	3 BHK	1540
FLAT B	2 BHK	1122
FLAT C	3BHK	1495
FLAT D	3BHK	1460

Quality in every Square Foot.

# Global SAMRIDDHI ENCLAVE

**BOOKING OPEN  
FOR 2/3 BHK FLAT**

**8409989213**



**9431175027**

**9334510092**



**GLOBAL BUILDCON**

[www.globalbuildcon.co.in](http://www.globalbuildcon.co.in)

*Office :- Opp. Road No. 4, Behind Bank Of India,  
Ashok Niket, Ashok Nagar, Ranchi -2*



MADDY, 9304681838